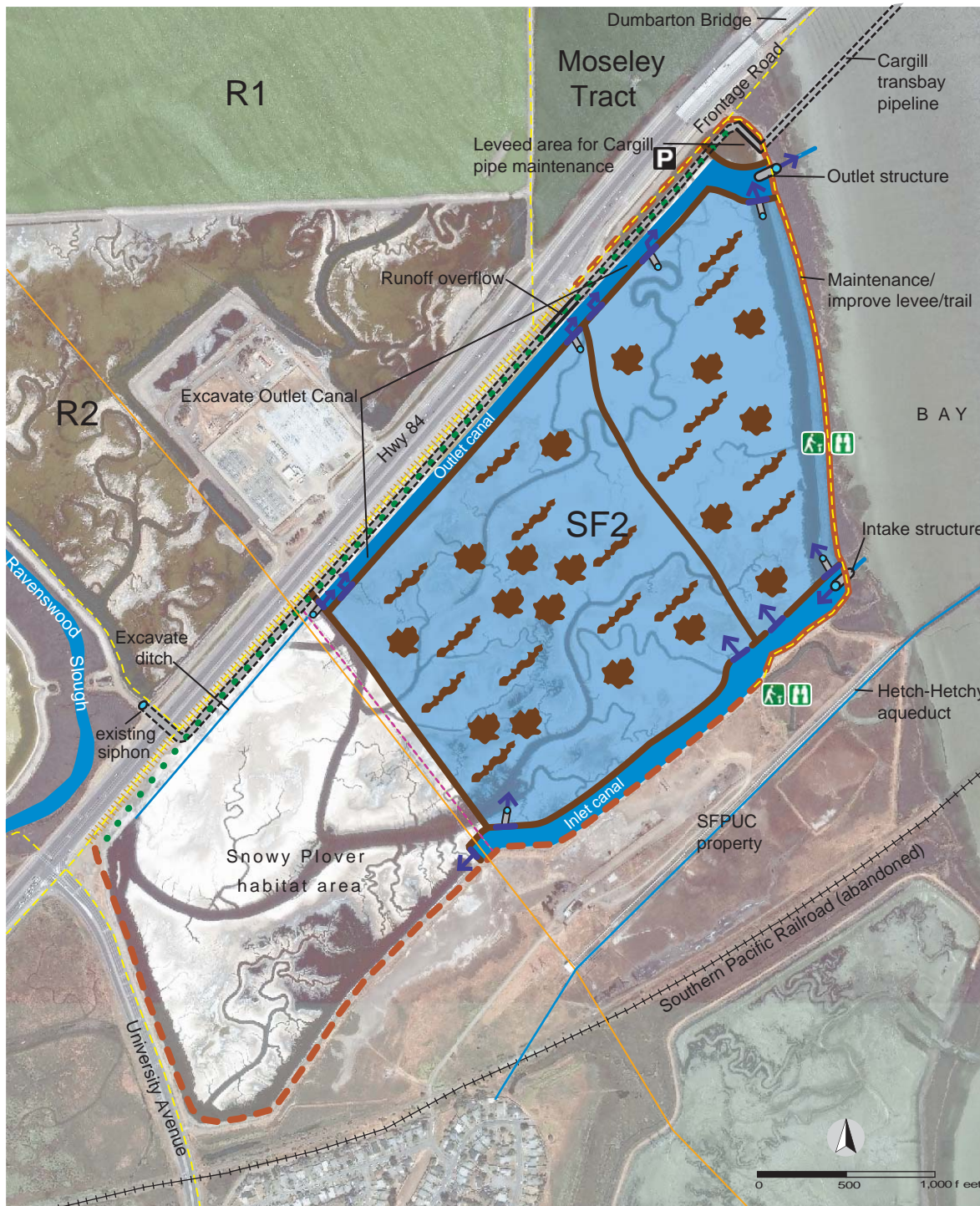


# South Bay Salt Pond Restoration Project

figure 2-21

## Ravenswood Pond SF2 Phase 1 Action Restoration Plan



- Earth berm
- Existing levee, to remain
- Levee/trail maintenance improvement
- Existing high ground
- Plantings
- Pilot channel
- Typical flow direction
- Pond intake/outlet water control structure (culverts with gates)
- Cell intake/outlet water control structures:**
- Weir
- Culvert with weir
- Existing above ground pipe, to remain
- Existing buried pipe, to remain
- Railroad
- Existing trails<sup>1</sup>
- Existing parking<sup>1</sup>
- Interpretive station<sup>1</sup>
- Viewing platform<sup>1</sup>
- PG&E overhead power transmission line
- Existing PG&E boardwalk
- Nesting island- linear (25)
- Nesting island- circular (25)

<sup>1</sup>See EIS/R Figure 2-22 for public access and recreation features.

#1750/phase1/basemaps/concept plans/ltidal ponds/Ravenswd\_PondSF 11\_08\_07.ai